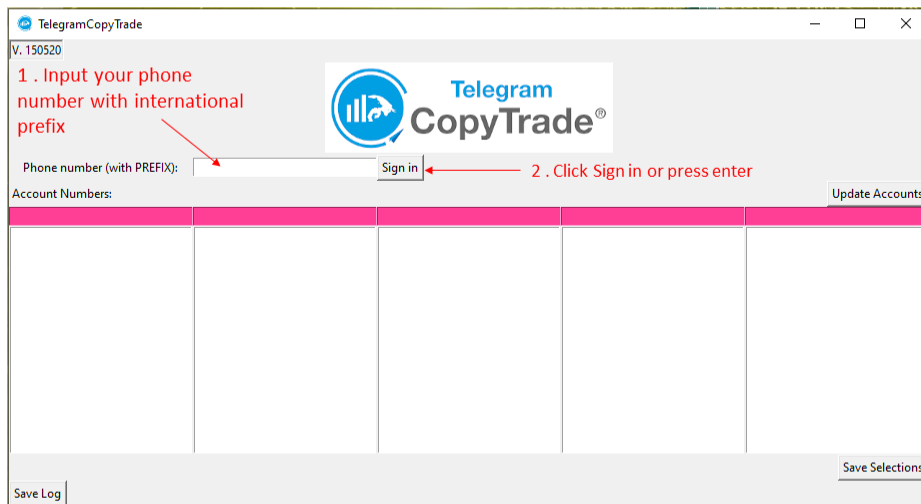




USER MANUAL

TelegramCopyTrade main window



TelegramCopyTrade
V. 150520

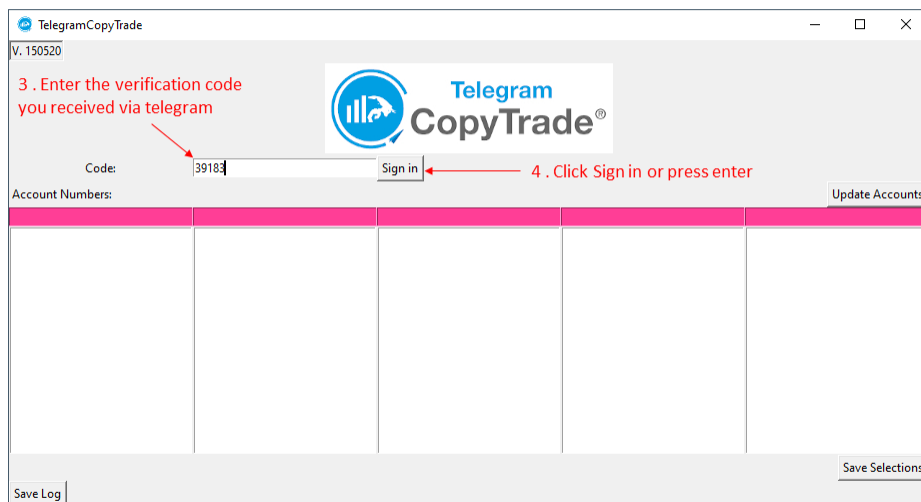
1 . Input your phone number with international prefix

Phone number (with PREFIX): Sign in

2 . Click Sign in or press enter

Account Numbers:

Save Log



TelegramCopyTrade
V. 150520

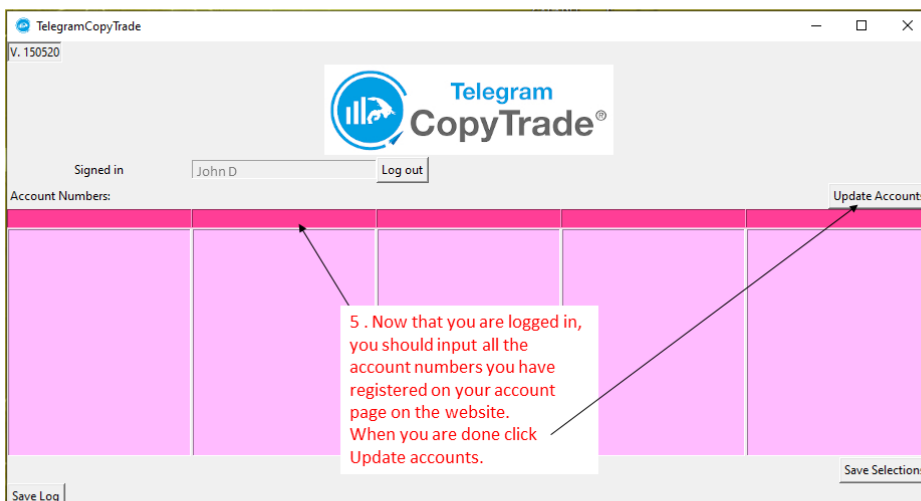
3 . Enter the verification code you received via telegram

Code: Sign in

4 . Click Sign in or press enter

Account Numbers:

Save Log



TelegramCopyTrade
V. 150520

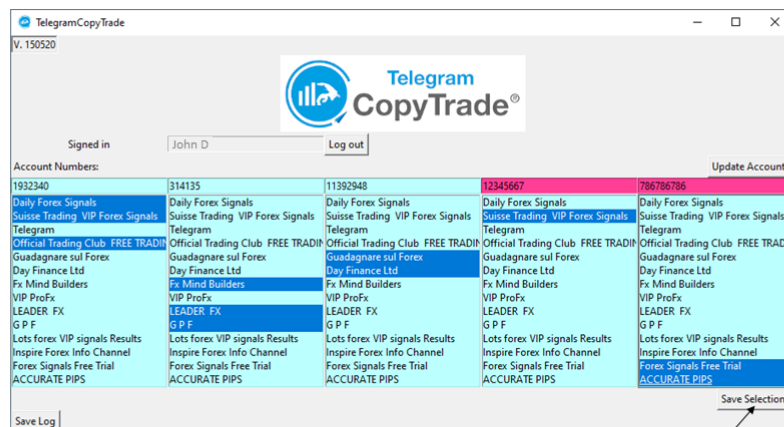
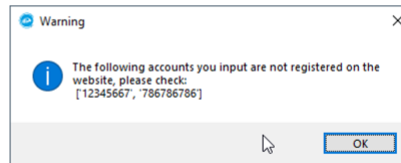
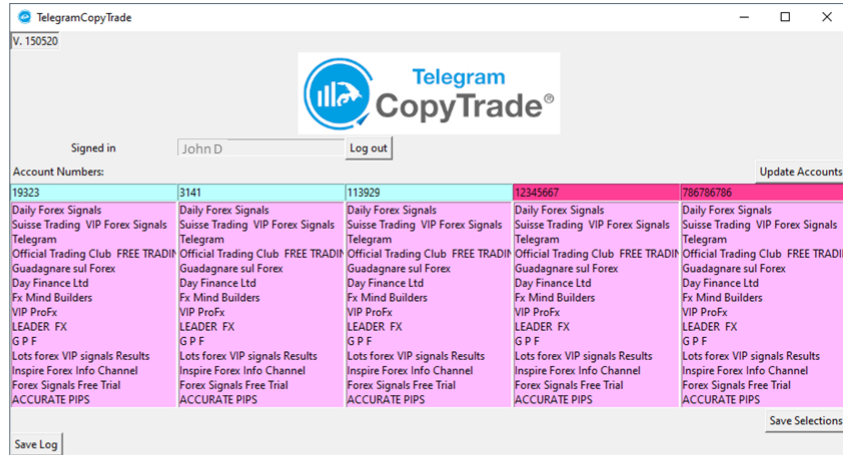
Signed in

Account Numbers:

5 . Now that you are logged in, you should input all the account numbers you have registered on your account page on the website. When you are done click Update accounts.

Save Log

6 . If the accounts you input are registered on the website, the account field background turns light blue. If the account number is not recognized you will get a popup saying that it's not registered and the field background keeps being rose.



7 . Select all the channels you want to monitor for each account and then press Save Selections. NB: If you don't press Save Selections the background keeps being pink and selection are not saved!! When selections are saved, background become blue.

Each time you change the selected channels, for example for adding or removing one channel, always press Save Selections, otherwise selections will not be saved!

8 . That's it, the software is ready to receive signals!

1. Money Management

This section allows you to select whether the orders should be opened with a fixed size or with a size calculated on the chosen risk percentage.

You can select **Fixed Lots** or **Risk Percent** from the setting called **FixedLots_or_RiskPercent**.

Fixed lots

If you select fixed lots, the total size for a signal will be the one set with

if_FIXED_size_for_each_signal, divided into **tp1percent**, **tp2percent** and **tp3percent**.

With **Usetp1**, **Usetp2** and **usetp3** you can select how many orders will be opened for a single signal.

If you set usept2 and usept3 to false, only one order will be opened.

So for example for each signal you want to have 3 orders opened with a size of 0.01 each.

You have to set:

- Fixed lots = true
- Size for each signal = 0.03
- Percentage lots = false
- Usetp2 = true
- Usetp3 = true
- Tp1percent = 33
- Tp2percent = 33
- Tp3percent = 33

Risk Percent

If you set percentage lots to true, you have also to set **if_PERCENT_risk_percent**, which is the percentage you want to risk calculated on your account equity.

So for example if you have an account equity of 1000 USD and you want to risk 3% of it, i.e. 30 USD, with 3 orders per signal, with a bigger size on the first order and then lower, you have to set:

- Fixed lots = False
- Percentage lots = True
- Risk percent = 3
- Usetp2 = true
- Usetp3 = true
- Tp1percent = 70
- Tp2percent = 20
- Tp3percent = 10

In this way, the system will automatically calculate the size related to the chosen risk (based on the StopLoss of the signal) and split it into the percentages. For example if the calculated total size is 0.1 lots, in this way it will open 3 orders, each one at 0.07, 0.02 and 0.01.

Min_freeMargin

If the free margin is below this value, no more trades will be opened. The trades which are already open will be managed normally.

2. SL TP Settings

Here you select what happens when the signal does not have a SL or TP defined.

In both cases you can choose what to do: Open with Custom SL (TP), Open Without SL (TP), Don't Open.

In case of "Open with custom SL" or TP is selected, you can select how many pips you want the SL (TP) to be from the entry price.

3. Breakeven_Trailing

BreakevenStrategy 1

If multiple orders are opened, when first TP is hit, the SL of the remaining orders are moved to the entry price. When second TP is hit, the remaining order SL is moved to the original first TP.

BreakevenStrategy 2

When the open orders are in profit of "Activation pips" pips, "close_percent" % of the position is closed.

After "move_to_entry_after_pips" pips, the SL is moved to the entry price.

So for example if we set:

- Activation pips = 10
- close_percent = 50
- Move_to_entry_after_pips = 20

and our entry price for a buy order is 1.1010. When the price reaches 1.1020, 50% of the order is closed. When the price reaches 1.1030, the SL is moved to the entry price.

Trailing

The trailing stop, if set to true, will be activated at **Trailing Start Pips** of profit. When trailing is activated the SL will be moved at **Trailing Stop Dist** pips from current price.

BE_pips

When SL is moved to entry price, **BE_pips** will be added (in case of a buy order) or subtracted (in case of a sell order).

So, for example, if the SL has to be moved to 1.1015 and BE_pips = 3, the SL will be moved to 1.1018.

4. Misc

Prefix and Suffix

Some brokers use prefixes and suffixes for their symbols.

For example if the symbol of EURUSD on your broker is « c_EURUSD.m », you have to set:

Prefix: c_

Suffix: .m

If your broker does not use any Prefix or suffix, leave these fields empty.

Current Price Enter

If you set this to True, the expert will enter at current market price, ignoring the entry price of the signal. This applies only for orders that are not pending. If signals with pending orders are sent, the entry price will be the one of the signal.

MaxDistancelProvider is the maximum distance in pips between the current market price and the signal provider price at which the order will be opened.

For example if you set it to 5 pips, and the signal is EURUSD buy 1.1010 and the current price is already at 1.1016, because of high volatility, the order will not be opened.

Modify_with_comment When update signals are received, they will affect all the open orders related to that symbol, if this variable is set to False, even if those orders were opened from different channels. If set to true, it affects only the orders opened from that particular channel.

5. Table

The overview table shows a detailed report of all the open trades and the past ones.

The amount of data shown in the “historical” part, the red one, depends on the amount of history you select in the History tab of your metatrader4.

If Show_only_ea is set to true, the table will show only the orders opened by this Expert advisor. If set to false it will show all the trades opened in the platform.

NB: this table works by reading the channel names written in the order comments. If your broker cancels or modifies the comments, the table could not work properly.

6. Equivalents

Here you write how the corresponding symbol / commodity / index is spell in your broker.

Therefore, if GOLD is “XAUUSD”, you have to write XAUUSD.